



## Sierra Wireless® InMotion Solutions oMM Management System

### FEATURES

- Advanced network diagnostics
- Real-time view of entire mobile network
- Remote troubleshooting and configuration management
- Multi-level user privileges
- Fleet segmentation
- Location-based reporting

## Mobile Enterprise Network Management

Sierra Wireless® delivers a suite of InMotion Solutions that connect mission critical workforces. As part of the InMotion portfolio, the oMM Management System (oMM) is a mobile network management system that collects and analyzes data from a fleet of oMG Mobile Gateways (oMG). The oMM incorporates powerful tools to manage your entire mobile network and to monitor the status, accessibility, and utilization of all oMGs and wide-area networks. The oMM is available as a hosted service, or as an appliance licensed for operation within your enterprise network.

### DASHBOARD

The dashboard provides a configurable, color-coded view of fleet health, enabling administrators to monitor a large number of oMGs and their associated operating parameters. Each parameter has a configurable multi-level threshold that can be programmed to change the color of each display icon as thresholds are exceeded. Display filters are provided to allow network managers to quickly focus on a subset of information. The fleet can be segmented into groups, and users assigned different levels of access. Many dashboard display parameters permit immediate 'drill down' for greater detail with a single click on a selected display element.

### REMOTE MANAGEMENT & CONFIGURATION

The oMM supports remote management of the operating configuration of each oMG device in the fleet. oMM users with administrative access can remotely reconfigure oMGs individually over-the-air, or can use the mass configuration capability to apply new oMG operating parameters to the entire fleet. These powerful remote management features are crucial to effective maintenance and long term performance of any large-scale mobile communications solution.

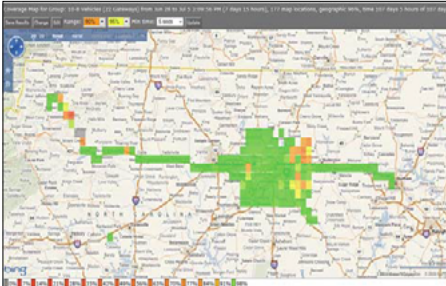
### CORE REPORTS

To augment the fleet status snapshot provided by the dashboard, historical reports are used for deeper analysis and troubleshooting using accumulated management information. Reports may be scheduled to run periodically, with results saved to the server and emailed to multiple recipients. Report data may be exported in Excel format for further manipulation or integration with other systems.

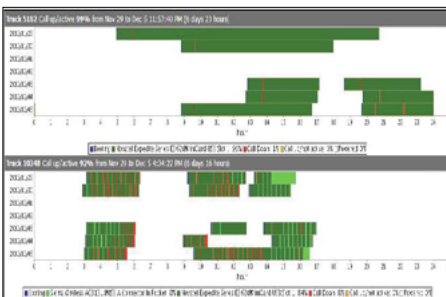
## EXAMPLE CORE REPORTS

CORE REPORT	DESCRIPTION
COVERAGE MAPS	Maps wide-area network coverage based on data from multiple oMGs over a specified time
COVERAGE TRAILS	Maps the wireless service accessed along a path travelled by individual oMGs
AVAILABILITY TREND	Summarizes wireless connection availability as a percentage of total vehicle operating time for selected oMGs
BANDWIDTH CONSUMPTION	Reports data received and transmitted on each network for an individual oMG or groups of oMGs
LINK UTILIZATION	A time-based depiction of network connection status and multi-network switching for individual oMGs
EVENT VIEWER	A powerful troubleshooting tool that filters raw vehicle event data for selected oMGs.

### COVERAGE MAP



### LINK UTILIZATION REPORT



## LOCATION-BASED REPORTING

GPS data supplied by the oMG is used by the oMM to provide a location-based view of management information. A map view of selected oMGs shows the last-reported location along with a color-coded flag to indicate the unit status. Network coverage, network utilization and system utilization reports are available in mapped display formats. All map data are provided by Google™ maps.

## STATISTICS

Access individual parameters for analysis and troubleshooting. oMG logs are automatically updated and stored on the server, ready for access at any time. Data may be sorted, filtered and displayed in a variety of ways to ensure your fleet communications platform continues to perform optimally.

### About Sierra Wireless

Sierra Wireless is building the Internet of Things with intelligent wireless solutions that empower organizations to innovate in the connected world. We offer the industry's most comprehensive portfolio of 2G, 3G, and 4G embedded modules and gateways, seamlessly integrated with our secure cloud and connectivity services. OEMs and enterprises worldwide trust our innovative solutions to get their connected products and services to market faster.

For more information, visit [www.sierrawireless.com](http://www.sierrawireless.com).